

Tools & Techniques for Using the Bright Futures Periodicity Schedule in Infancy & Early Childhood



MARCY CUSTER, RN, MS

ALASKA DIVISION OF PUBLIC HEALTH

SECTION OF WOMEN'S CHILDREN'S AND FAMILY HEALTH

SEPTEMBER 25, 2014



Objectives



Use the Bright Futures Periodicity Schedule to identify age appropriate health screening criteria during infancy and early childhood.

Identify at least two best practice tools or techniques for completing a Bright Futures well-child visit during infancy and early childhood.



Bright Futures
Well Child Visits

Bright Futures Periodicity Schedule



PEDIATRICS®

OFFICIAL JOURNAL OF THE AMERICAN ACADEMY OF PEDIATRICS

2014 Recommendations for Pediatric Preventive Health Care
COMMITTEE ON PRACTICE AND AMBULATORY MEDICINE, BRIGHT
FUTURES PERIODICITY SCHEDULE WORKGROUP
Pediatrics 2014;133:568; originally published online February 24, 2014;
DOI: 10.1542/peds.2013-4096

The online version of this article, along with updated information and services, is
located on the World Wide Web at:
<http://pediatrics.aappublications.org/content/133/3/568.full.html>



Key



Best practice tools or techniques



Best practice tools or techniques

0 – 24 Months

WHO Growth Charts

- ❑ **Weight-for-age**
- ❑ **Length-for-age**
- ❑ **Weight-for-length**

2 – 20 Years

CDC Growth Charts

- ❑ **Weight-for-age**
- ❑ **Stature-for-age**
- ❑ **BMI-for-age**

Best practice tools or techniques

- Accuracy
- Reliability



Identify age appropriate health screening criteria

Blood Pressure



Best practice tools or techniques



TABLE 3

Blood Pressure Levels for Boys by Age and Height Percentile*

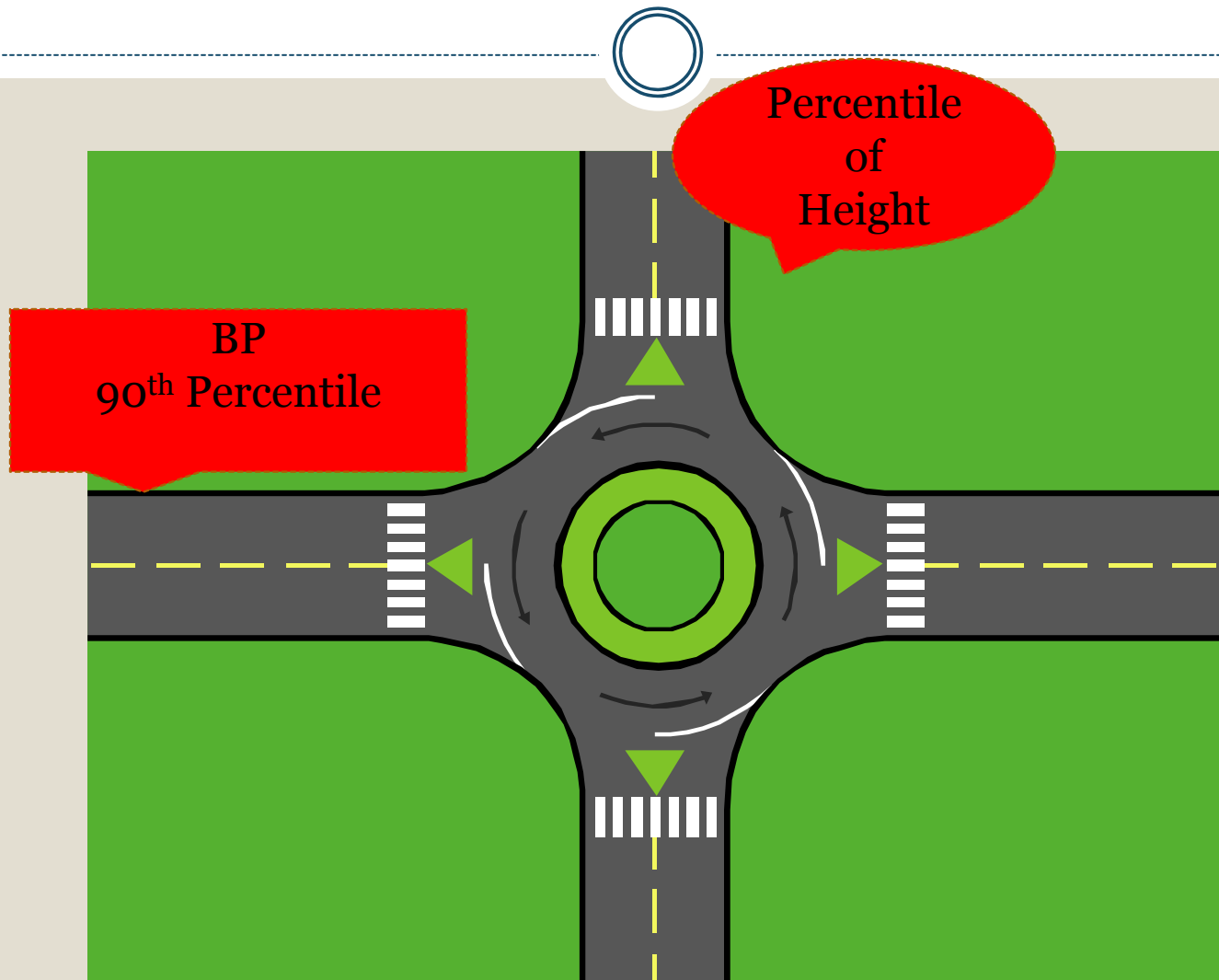
Age (Year)	BP Percentile ↓	Systolic BP (mmHg)							Diastolic BP (mmHg)						
		← Percentile of Height →							← Percentile of Height →						
		5th	10th	25th	50th	75th	90th	95th	5th	10th	25th	50th	75th	90th	95th
1	50th	80	81	83	85	87	88	89	34	35	36	37	38	39	39
	90th	94	95	97	99	100	102	103	49	50	51	52	53	53	54
	95th	98	99	101	103	104	106	106	54	54	55	56	57	58	58
	99th	105	106	108	110	112	113	114	61	62	63	64	65	66	66
2	50th	84	85	87	88	90	92	92	39	40	41	42	43	44	44
	90th	97	99	100	102	104	105	106	54	55	56	57	58	58	59
	95th	101	102	104	106	108	109	110	59	59	60	61	62	63	63
	99th	109	110	111	113	115	117	117	66	67	68	69	70	71	71
3	50th	86	87	89	91	93	94	95	44	44	45	46	47	48	48
	90th	100	101	103	105	107	108	109	59	59	60	61	62	63	63
	95th	104	105	107	109	110	112	113	63	63	64	65	66	67	67
	99th	111	112	114	116	118	119	120	71	71	72	73	74	75	75
4	50th	88	89	91	93	95	96	97	47	48	49	50	51	51	52
	90th	102	103	105	107	109	110	111	62	63	64	65	66	66	67
	95th	106	107	109	111	112	114	115	66	67	68	69	70	71	71
	99th	113	114	116	118	120	121	122	74	75	76	77	78	78	79



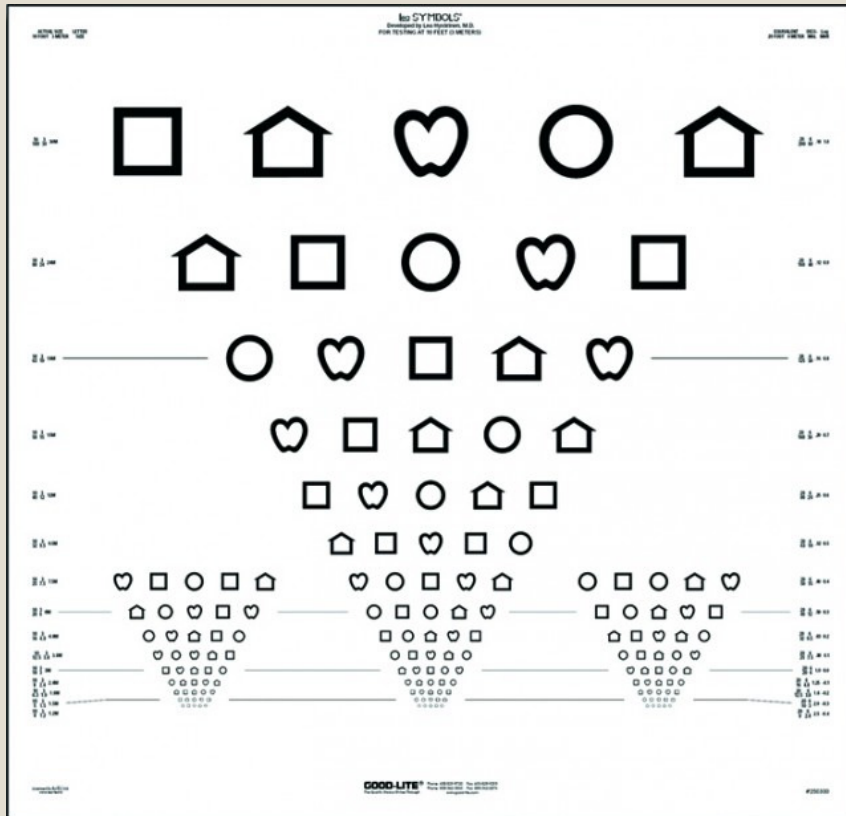
U.S. Dept of Health and Human Services. National Institutes of Health, National Heart, Lung, and Blood Institute (2005)

Section of Women's, Children's, and Family Health

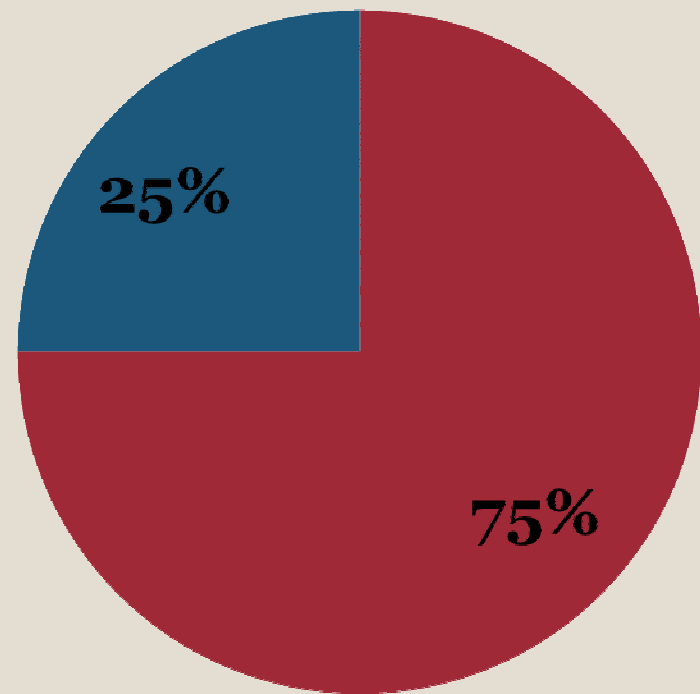
Best practice tools or techniques



Identify age appropriate health screening criteria



Best practice tools or techniques



Optotypes

Best practice tools or techniques

Stereovision Screening



Best practice tools or techniques



Identify age appropriate health screening criteria



**DEVELOPMENTAL/
BEHAVIORAL
ASSESSMENT**

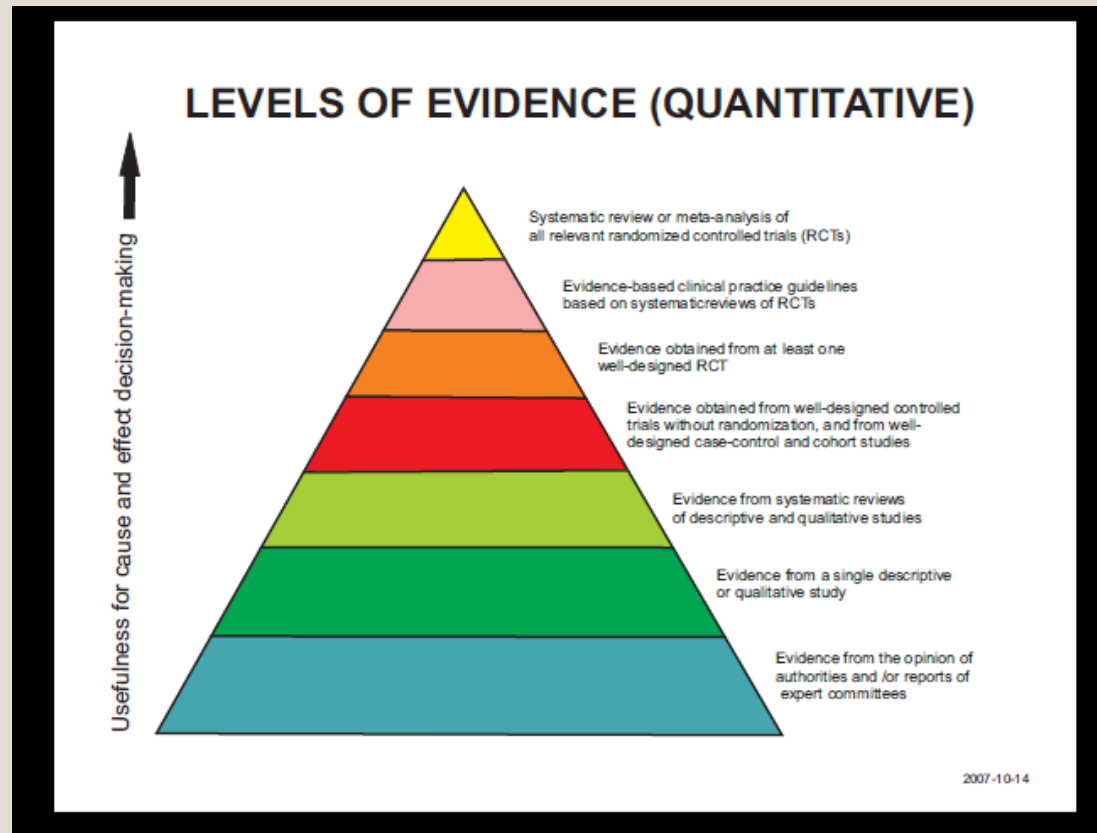


Best practice tools or techniques



Identification of Developmental-Behavioral Problems in Primary Care: A Systematic Review

Sheldrick, et al.,
2011
Pediatrics, 128
(2), 356-363.



Best practice tools or techniques



- **Ages and Stages Questionnaire (3rd ed.) (ASQ-3)**
- **Parents Evaluation of Developmental Status (PEDS)**
- **PEDS: Developmental Milestones (PEDS:DM)**
- **Modified Checklist for Autism in Toddlers Revised (M-CHAT-R)**

Centers for Disease Control and Prevention

MMWR

Morbidity and Mortality Weekly Report

Surveillance Summaries / Vol. 63 / No. 2

March 28, 2014

**Prevalence of Autism Spectrum Disorder
Among Children Aged 8 Years — Autism and
Developmental Disabilities Monitoring Network,
11 Sites, United States, 2010**

PEDIATRICS®

OFFICIAL JOURNAL OF THE AMERICAN ACADEMY OF PEDIATRICS

**Validation of the Modified Checklist for Autism in Toddlers, Revised With
Follow-up (M-CHAT-R/F)**

Diana L. Robins, Karis Casagrande, Marianne Barton, Chi-Ming A. Chen, Thyde
Dumont-Mathieu and Deborah Fein

Pediatrics 2014;133;37; originally published online December 23, 2013;
DOI: 10.1542/peds.2013-1813

Identify age appropriate health screening criteria

PHYSICAL EXAMINATION



Best practice tools or techniques

Newborn Metabolic Screening



Critical Congenital Heart Defect Screening



Best practice tools or techniques



IMMUNIZATION



Identify age appropriate health screening criteria



**HEMATOCRIT
OR
HEMOGLOBIN**



Identify age appropriate health screening criteria



LEAD SCREENING



Identify age appropriate health screening criteria

TUBERCULOSIS TESTING



Identify age appropriate health screening criteria



DYSLIPIDEMIA SCREENING



Best practice tools or techniques



ORAL HEALTH

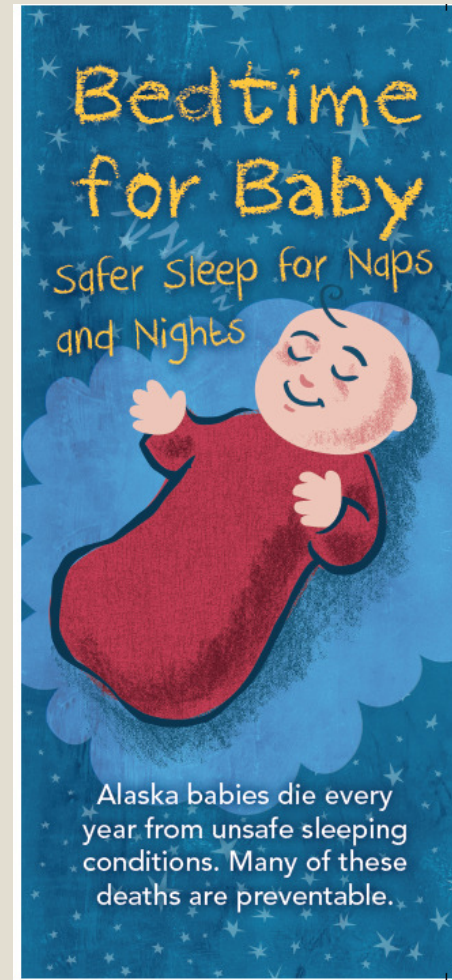


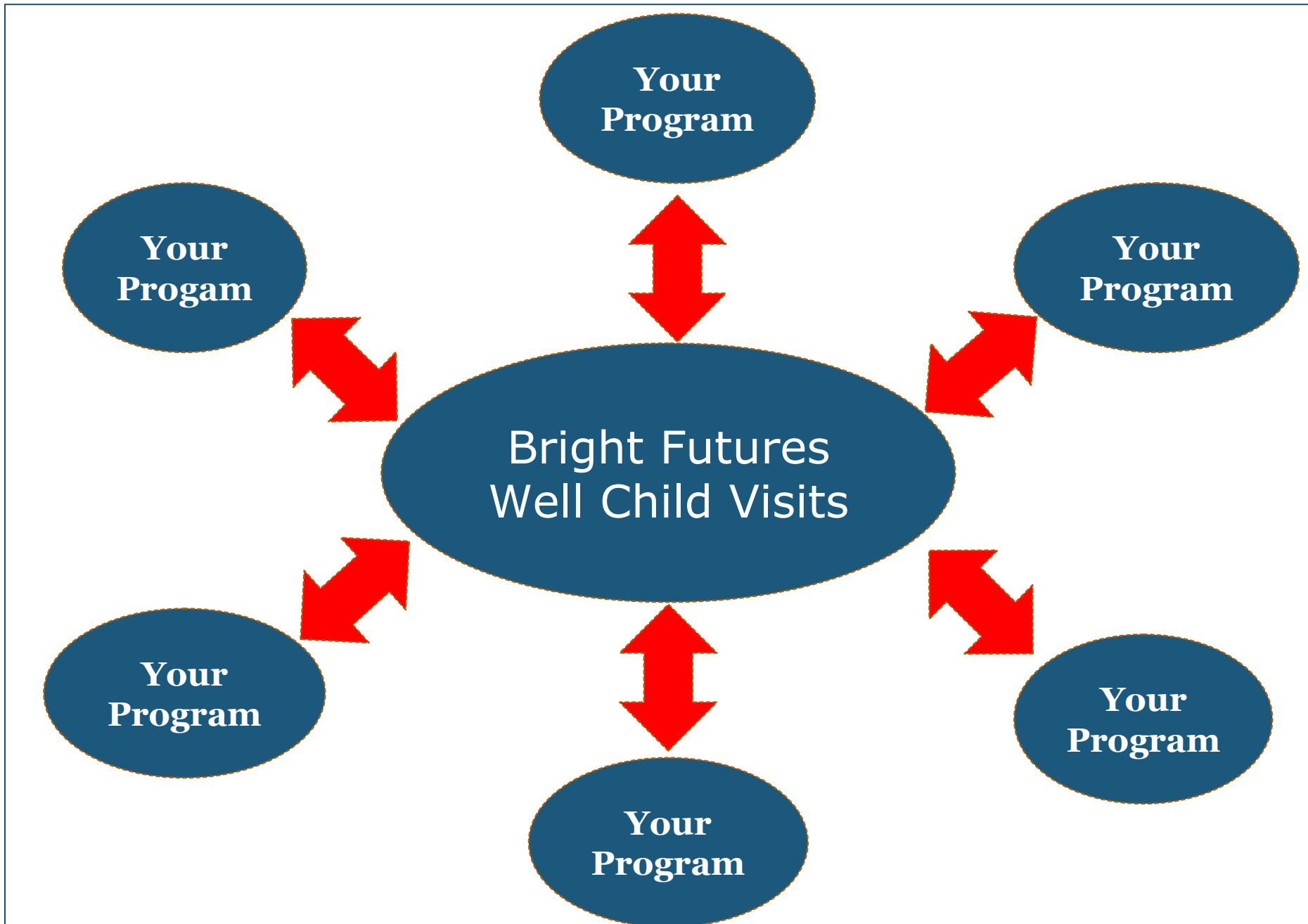
http://brightfutures.aap.org/Oral_Health_Risk_Assessment_Resources.html

Section of Women's, Children's, and Family Health

Best practice tools or techniques

ANTICIPATORY GUIDANCE





References



Autism and Developmental Disabilities Monitoring Network Surveillance Year 2010 Principal Investigators. (2014). Prevalence of autism spectrum disorder among children 8 years – Autism and Developmental Disabilities Network, 11 sites, United States, 2010. *MMWR*, 63 (SS0 2); 1-21. Retrieved from <http://www.cdc.gov/mmwr/preview/mmwrhtml/ss6302a1.htm>

Centers for Disease Control and Prevention. (2014). Facts about ASD. Retrieved from <http://www.cdc.gov/ncbddd/autism/facts.html>

Centers for Disease Control and Prevention. (2013a). Use and interpretation of the WHO and CDC growth charts for children from birth to 20 years in the United States. Retrieved from <http://www.cdc.gov/nccdphp/dnpa/growthcharts/resources/growthchart.pdf>

Centers for Disease Control and Prevention. (2013b). WHO growth chart training. Using the WHO growth charts to assess growth in the United States among children ages birth to 2 years. Retrieved from <http://www.cdc.gov/nccdphp/dnpao/growthcharts/who/index.htm>

Centers for Disease Control and Prevention, Atkinson, W., Wolfe, S., Hamborsky, J. (Eds.). (12th ed., second printing. (2012). *Epidemiology and prevention of vaccine preventable diseases*. Washington, D.C.: Public Health Foundation. Retrieved from <http://www.cdc.gov/vaccines/pubs/pinkbook/index.html>

Centers for Disease Control and Prevention. (2000). Growth charts training. Retrieved from <http://depts.washington.edu/growth/>

Committee on Practice and Ambulatory Medicine. (2014). 2014 recommendations for pediatric preventive care. *Pediatrics*, 133 (568). DOI: 10.1542/peds.2013-4096. Available at <http://pediatrics.aappublications.org/content/133/3/568.full>

Hagen, J.F., Shaw, J.S., & Duncan, P.M. (2008). *Bright futures. Guidelines for health supervision of infants, children, and adolescents*. (3rd ed.). Elk Grove, IL: American Academy of Pediatrics.



References



Lawrence, R.A. (2010). Does breastfeeding protect against overweight and obesity in children? A review. *Childhood Obesity*, 6 (4), 193-197. DOI: 10.1089/chi.2010.0417

Robins, D.L., Cadagrande, K., Barton, M., Chen, C.M., Dumont-Mathieu, T., & Fein, D. (2014). Validation of the modified checklist for Autism in toddlers, revised with follow-up (M-CHAT-R/F). *Pediatrics*, 133 (1), 37-45. doi: 10.1542/peds.2013-1813. Retrieved from <http://pediatrics.aappublications.org/content/133/1/37.long>

Robins, D.L. (2013). Official M-CHAT website. Retrieved from http://www2.gsu.edu/~psydlr/M-CHAT/Official_M-CHAT_Website.html

Robins, D. Fein, D. & Barton, M. (2009). Modified checklist for autism in toddlers, revised with follow-up (M-CHAT-R). Retrieved from http://www2.gsu.edu/~psydlr/M-CHAT/Official_M-CHAT_Website_files/M-CHAT-R_F.pdf

Tanski, S., Garfunkel, L.C., Duncan, P.M., & Weitzman, M. (Eds.). (n.d.) *Performing preventive services. A Bright Futures handbook*. American Academy of Pediatrics. Retrieved from http://brightfutures.aap.org/continuing_education.html

U.S. Department of Health and Human Services. National Institutes of Health. National Heart, Lung, and Blood Institute. (2005). *The fourth report on the diagnosis, evaluation, and treatment of high blood pressure in children and adolescents*. Retrieved from http://www.nhlbi.nih.gov/health/prof/heart/hbp/hbp_ped.pdf



Thank You



MARCY.CUSTER@ALASKA.GOV

(907) 269-3400

SECTION OF WOMEN'S, CHILDREN'S, AND FAMILY HEALTH

3601 C STREET, SUITE 322

ANCHORAGE, AK 99503

